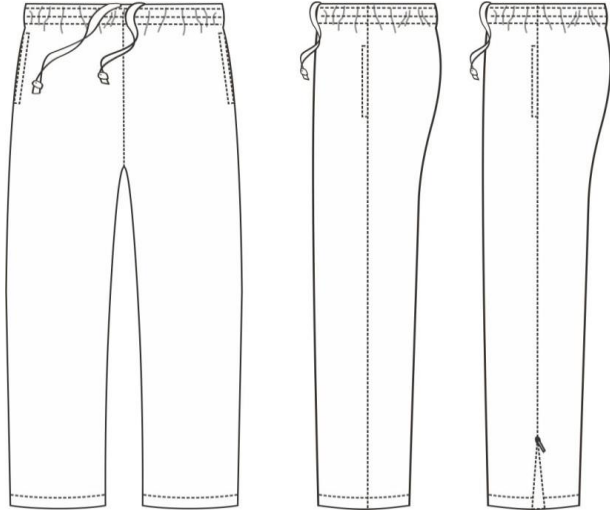


JUNIOR TRACKSUIT TOP

Size in CM	1/2	2/3	3/4	4/5	5/6	7/8	9/10	11/12	13/14
Half Chest	36	38	40	42	44	46,5	49	51,5	54
Half Hem	36	38	40	42	44	46,5	49	51,5	54
Centre Back Length	34	38	44	46	48,5	53	57,5	62	66,5
Back Neck Width	15	16	17	18	19	20	21	21	21
Front Neck Drop	5,5	5,5	5,5	5,5	5,5	5,5	5,5	5,5	5,5
Half Collar					21	21,5	22	22,5	23
Armhole	17	18	19	21	22	23	24	25	26
Shoulder Length - NO HOOD	6	7	8	9	11	12	13	14	15
Sleeve Length	30	32	36	38	39	44,5	51	55	60
Cuff Opening - Relaxed	6,5	6	7,5	7	8	8,5	9	9,5	10
Pocket Opening	10	10	10	10	10	15	15	16	16
Hood Width	19	20	22,5	22	23	23,5	24	24,5	25
Hood Height	32	32	32	32	32	32	32	32	32
Hood Opening	31	31	31	31	31	31	31	31	31
ZIP Length					51	55	60	65	69
Cutt Elastic 20mm	13	14	15	16	17	18	19	20	21

Measurements taken individually from patterns and will have a variance in final measurements. Tolerance from 1cm to 1.5cm is to be expected.



JUNIOR TRACKSUIT PANTS

Size in CM	5/6	7/8	9/10	11/12	13/14
Half Waist Relax	25	27	29	31	33
Half Hip	43,5	45,5	47,5	49,5	51,5
Front Rise	23,5	25	26,5	28	29,5
Back Rise	31,5	33	34,5	36	37,5
Inside Leg	51	56	61	66	71
Half Leg Opening (OPEN HEM)	17,5	18,5	19,5	20,5	21,5
Half Leg Opening (CUFFED)	10	10,5	11	11,5	12
Pocket Opening	15	15	15	15	15
Drawcord Length		99	103	107	111
Cut Elastic 20mm	21	22	23	24	25
Waist Elastic 40mm	51	55	59	63	67

Measurements taken individually from patterns and will have a variance in final measurements. Tolerance from 1cm to 1.5cm is to be expected.