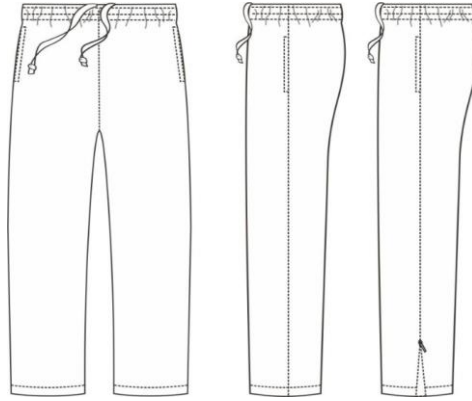


SENIOR TRACKSUIT TOP

<i>Size in CM</i>	<i>TOL mm</i>		2XS		XS		S		M		L		XL		2XL		3XL		4XL		5XL
Half Chest			48		51		54		57		59		62		66		70		75		79
Half Hem			46		49		52		55		58		61		64		69		73		77
Centre Back Length			64		66		69		71		72		74		76		79		80		82
Shoulder Seam Set In			13		14		15		16		18		19		20		22		21		22
Arm Hole Set In			20		21		22		23		24		25		26		27,5		29		30,5
Sleeve Length Set In			57		59		61		63		57		58		59		60		70		71
Sleeve Cuff Width			13		13,5		14		14,5		14		14,5		15		15		17		17,5
NSP - NSP Back Neck			16		17		18		19		19		21		22		23		24		25
Neck Drop			7		7		7		7		7		7		7		8		8		8
Zip Length			66		68		70		72		74		76		78		80		82		84
Pkt Opening			16		18		18		18		18		18		18		18		18		18

Measurements taken individually from patterns and will have a variance in final measurements. Tolerance from 1cm to 1.5cm is to be expected.



SENIOR TRACKSUIT PANTS

<i>Size in CM</i>	<i>TOL mm</i>	2XS	XS	S	M	L	XL	2XL	3XL	4XL	5XL
Half Waist Relax	15	27	29	31	35	39	43	47	51	55	59
Half Hip	15	50	52	54	57	62	65	67	72	77	81
Front Rise	10	26	27	28	29	30	31	32	33	34	35
Back Rise	10	31	32	33	34	35	36	37	38	39	40
Inside Leg	10	79	79	79	79	79	79	79	81	81	81
Half Leg Opening	5	20	21	22	23	24	25	26	27	28	29
Pocket Opening	5	16	16	16	16	16	16	16	18	18	18
Cut Elastic 40mm		56	58	64	72	80	88	96	104	112	120
Jnr Hem Elastic 20mm		23	24	25	27	28	29	30	32	33	34
Hem Zip		15	15	15	15	15	15	15	15	15	15
Opening Elastic Hem	5	10,5	11	11,5	12,5	13	13,5	14	15	15,5	16

Comments:

Please be advise due to fabric variation and reacion we have a tolerance of 1.5cm #

EG> If your usual size feels a bit on the tight side go one size bigger